

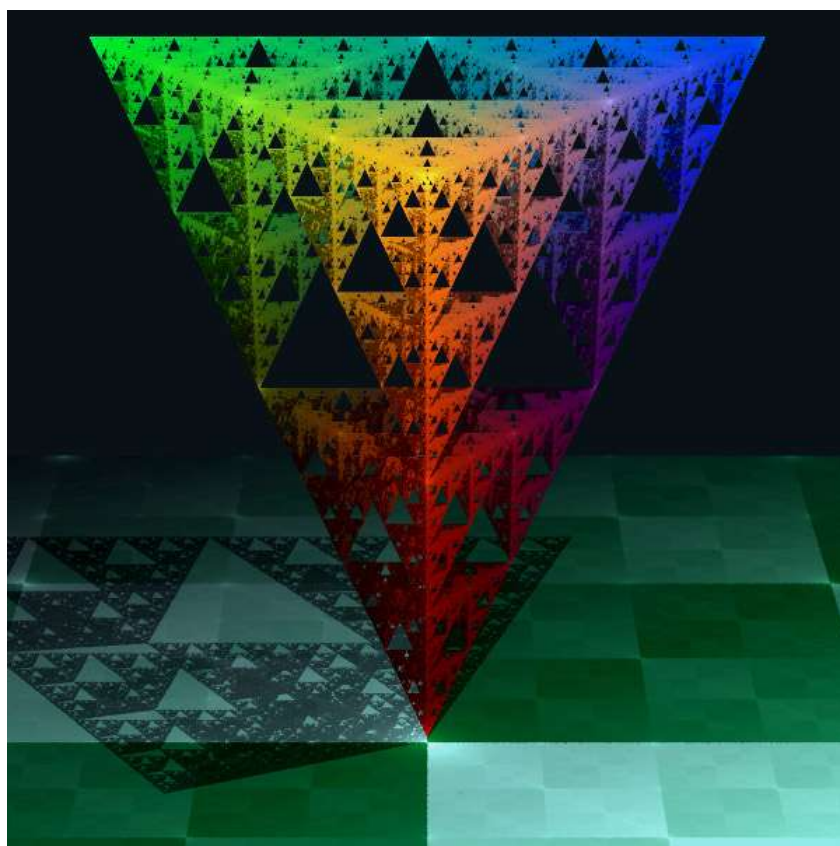
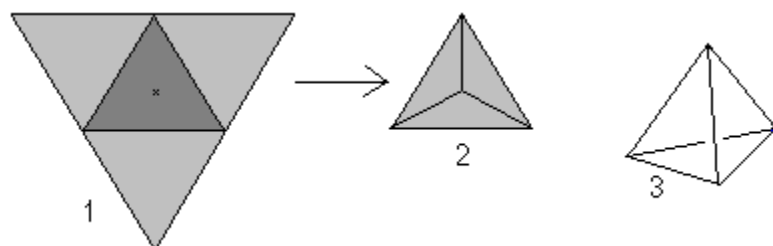
Biocosmological Electromagnetic

Gal-Interactions

by Suzzannee Chappell

Table Of Contents

The Necessary Functions	5
Bio-electromagnetism	8
The Chappell Concept	13
T.A.R.A.	21
Biocosmological Connections	27
Time Formulations	31
Electromagnetism	34
Singularity	36
Formulas of Intent	38
Rainbow Manifestations	62
Bibliography	70



Multidimensional Tetrahedron

The Necessary Functions

It is time for the shift to occur:

We are facing a wave of such magnitude that many of us will not survive , still ready to face what is coming, about to ride it we need to know some very important pieces of information in order to pass through the barrier. I hope to be of some assistance. Some of it is simple food and what to make sure you have on hand within the body, some of it is metaphysical, some of it is practical, mathematical and some of it is spiritual. If you are nearly ready these words seem obsolete, yet I feel I must iterate them to take us from the point of no return where darkness and light manifests in matter.

Since interconnectedness is real we must therefore adapt the premise of our biocosmological connection to everywhere there is found the essential building blocks.

I feel it is necessary to approach the coming of the new age expecting to evolve , but in what way is it going to occur? Well as the old Indian saying goes, there is a dark angry wolf inside and a kind loving wolf inside of us all. Which one will grow? The one we feed.

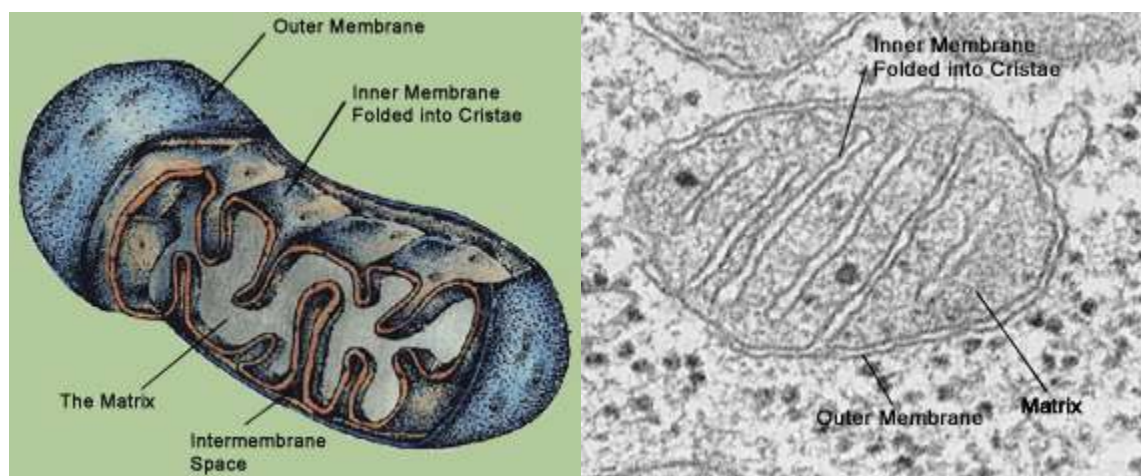
I feel it is necessary for the evolution of our species to increase our vibrational frequency in order to survive the coming changes. I also feel that as we grow we should be able to help all humanity to produce food and energy without harming ourselves or others. This is my approach, apply medical and physical knowledge to intuitive knowledge and see how the universe at large responds, then apply spiritual awareness. This will obtain results. It is my intent to co-create a machine through which this process may be accomplished.

I have written this paper to assist humankind in the evolution of our species- it is my wish to explore my theories with constructive intent. Please help us get through this time of Political ignorance as far as science is concerned and confer with us in our indulgence toward the truth...

Mitochondrion

I have introduced first the mitochondria as it shows, according to my understanding of the way our universe works , a map of the interactions that occur to create our bubble universe.

The mitochondrion consists of four major sections – the outer membrane, the intermembrane space, the inner membrane, and the matrix.



Left: Diagram of a mitochondrion. **Right:** Electron Micrograph of a mitochondrion.

The Outer Membrane

This membrane contains a great number of large transport proteins, which allows for large molecules to enter with ease. This membrane includes proteins that can convert lipid substrates into forms that can be used by the matrix. This act itself constitutes the way in which manifestation occurs from our thoughts to our reality. Functioning in the matrix is of utmost importance, both spiritually and mentally.

The Intermembrane space constitutes the “Schwartzchild cap” as we will show later in the matrix formation of plasmatic membrane through

which information can pass or be downloaded. The matrix is the actual “stuff or plasma “ from which manifestation occurs. Its’ context will be molded by the intent of the bodymind and of course, what you feed it.

In Christopher Knight and Robert Lomas’ book *Uriel’s Machine* it talks about how we all may have come from a single womans’ mitochondria.

“ Over time, mutations occurred, so that the mitochondrial chromosomes of various human families gradually diverged and differences became more and more distinct over thousands of years. Because mDNAs do not recombine with each other, every human female retains an inbuilt coded of her evolutionary history back to the dawn of time.

Geneticist Wesley Brown ...of the University of California ...was surprised to pinpoint a relatively recent common female ancestor for all living humans ... the “ Mitochondrial Eve”

(Pp.5 Uriels’ Machine , Random House, Copywrite, 1999 Knight, Lomas).

From this “Eve” we have obtained the mitochondrian path that can now be adapted to the new techno-spiritual and metaphysical age upon us. Again, we feel this can be accomplished by frequency adaptations. Lynn McTaggart explains that consciousness is coherent light (The Field) and if this is true then the more light within our consciousness then the more consciousness we shall be coherent with. Mitochondria allows for this to deepen and integrate.

We explain this through the means of bio-electromagnetism.

Bio-electromagnetism

Gravitation is an effect, not a constant. It changes and fluctuates. We consider this effect to be constant because we do not notice readily how different environments affect the state or status of gravity waves.

During magnetic flux, centripetal and centrifugal fields, under water, in a vacuum, moving at high speeds and in space gravity fields and force are changed or warped.

Breaking the sound barrier as Mach discovered changed moles and their structure. This clue leads us to the next logical projection;

That matter being also a field of particles can also thus be affected.

The continuance of this type of study reveals the concept of gravitational warp fluctuations and how they happen.

It is common knowledge that the Earth's gravitational field fluctuates when the Sun flares hit us and that it shapes like a lemon around the Earth very similarly to the magnetic field surrounding Earth. This is known as "bending or warping space" The space around us is warped due to the matter of the planet that is activated by magnetic flux which, circulated and empowered by storms that are constantly happening then cause grav-waves to be activated.

Activated matter is not inert.

As constituents of Planet Earth, we take for granted the fact that nature balances things out for us and it is of great importance that we maintain our respect of nature and its' cause.

Every interaction in nature has its' opposite and charges are constantly being interacted with. By this action =reaction formula we introduce the concept of "activated matter" and "inactivated matter"

THE INTRICATE WORKS OF THE UNIVERSE

Magnetic flux field wave variation drives the entire universe.

The Great divide, the cosmic connection to an enigmatic universe full of mystery and form, we consider this our home. It is home to many. The great quest is to have understanding of its works and how to capture, as it were, its mysteries. There is so much to explore.

The latest theories that talk about “*entanglement*” comes the closest I have seen, to the correct perception of the Cosmic – Biological essence we call the Universe.

She responds as though it has a consciousness of its’ own . Small particles act the same as large galaxies. Quarks can interchange spatial frameworks from dimension to dimension and scientists off the coast of Africa have sent particles 89 miles away to be received by another laboratory.(see Brain Greene’s The Cosmos)

Although this is cutting edge quantum physics in motion, but it is still missing the heart of the matter.

Which brings me to my point. The correct term to describe the field is actually “Timespacematter”. I say this confidently as I will explain to you the reason for my theory.

When the Big Bang occurred 14 million years ago, the explosion threw out a tremendous force. That force is still moving. That force is still operating, continuing along. The space-time matter field then picks up charge as it interacts with matter thus sparking kinetic and electromagnetic changes which fuels its journey. It is called the Law of Conservation. That is why it is picking up speed.

Now the charged matter is then what I call “activated matter” charged matter, positive matter as opposed to negative matter or “inactivated matter.”

The inactivated matter exists as Dark Energy. A plasmatic space time antimatter field which has a field but carries a double negative charge so seems to be inert, however, upon further examination it makes sense that once the positive matter fields interact with exchanging magnetic field fluctuations it then will also interact.

For every action there is an equal and opposite reaction.

It seems strange to me that quirks, quarks and neutrinos will zip around the inner field of an atom but will stay stationary when being examined.

For every action there is an equal and opposite reaction.

Again the vehicle that drives the Universe is electromagnetic in wave field and powered by Gamma ray and heliotrophic radiational fields.

However as I alluded earlier it is my belief that it also has a consciousness of sorts. A supraconsciousness which seems to have existed always. In spiritualism a God/dess like awareness that has been the cause of many illuminations and many deaths.

I refer more to the way in which Indigenous peoples could proliferate astounding predictions and almost to the day calendars accounting to various dispositions, times of birth, place of birth and indeed right to the accounting of what emotional forces may be present in each individual. All indigenous peoples believe in some sort of Divine force that guides them. And it seems so that there must be some reason for all of this to exist.

Biocosmology is the study of our innate biological connection to all things in this universe.

I think that is what Einstein was talking about when he discovered

Spooky Energy at A distance” in quantum physics. Any particle that is “entangled” with another will be affected by the first and can exchange field variances- in other words – they affect each other.

What makes them entangled?

Bio-Magnetic interaction.

Geonomes are the means through which proteins can convert metabolic functions into energy – an essential aspect of energy conversion in the body and the body of the universe. This is the type of mechanism that assists to convert inactivated matter to activated matter.

Geonomes:

Eukaryotic Cells

Eukaryotic cells (from the Greek meaning truly nuclear) comprise all of the life kingdoms except monera. They can be easily distinguished through a membrane-bound nucleus.

Eukaryotic cells also contain many internal membrane-bound structures called organelles. These organelles such as the mitochondrion or chloroplast serve to perform metabolic functions and energy conversion. Other organelles like intracellular filaments provide structural support and cellular mobility. The function of individual organelles is described in detail...

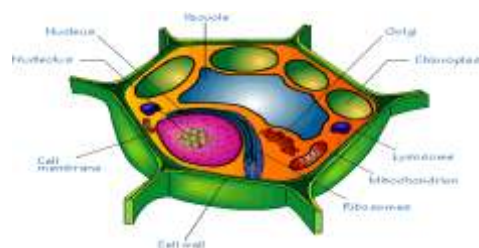


Diagram of a plant cell.

Larger than other prokaryotes- they abundantly reproductive DNA up to 1,000,000,000 times- coding sequence notwithstanding(nutrinos- separation coding within geno lines that indicate functional domains- extremely rare- Introns; the glue that tells the DNA to create a certain function.

These functions relate to the bodys' ability to conserve and administer and convert energy from the matrix. It is most interesting that algae assist in the production of the geotinoses. It is also these cells in which transmutation of energy will activate the unknown "144 th element" (MATHEMATICS OF THE WORLD GRID, *Bruce Cathie*) .

"The term *algae* is now restricted to [eukaryotic](#) organisms.... They exhibit a wide range of reproductive strategies, from simple, [asexual](#) cell division to complex forms of [sexual reproduction](#).^[7]" And assist in producing complex adaptations.

Entanglement

If you took moles A ,B and C and created a sine wave by sending lightwaves to one of their centres to the centre of the nucleus the moles would send the energy automatically to the others therefore creating a triangulation , you therefore obtain a vortex tetrahedron that creates entanglement.

Now think in terms of dimensions. Inverse reverse means taking the original form inverting it to a negative terminal (numerical) and creating the inverse of that so it becomes as it were a double negative which creates a positive repulse impulse reaction in the double positive universe. In other words the vacuum field carries a double negative charge while the positive conventional

universe carries a double positive while interaction between them is a double polarity.

Entanglement is observed in both aspects of vacuum and physical functions.

Magnetic Interaction

$\cos = \text{length} / \text{sq. rt. } d^2 + l^2 = d^2 \text{ plus } l^2$

(ie. The bar magnet is 10cm long. The centre of that bar magnet 5 cm d = the distance of the whole bar magnetic emerging from its' centre. Therefore 5 cm of magnetic force will be evoked from this length of bar magnet:

$N/S = M / d^2 + l^2$

Repulsion will be parallel to axis(line of force going through the centre) of magnet.

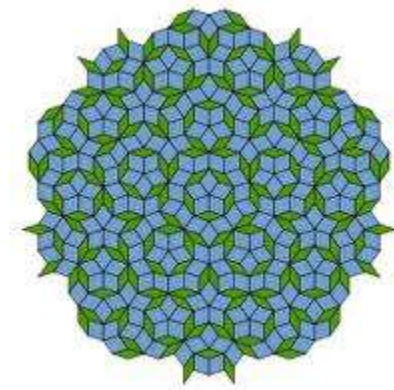
If θ = the angle each force makes upon the axis the resultant forces is:

$$2m / d^2 + l^2 \cdot L / (d^2 + l^2)^{1/2} = M = M / (d^2 + l^2)^{3/2}$$

We now look at how magnetic propulsion/ quantum interactions affect the biocosmological function.



Penrose Triangle and tiling



Vector ratios in Spacetime matter 3 or 4D relationship frameworks (ie. Penrose tiles and triangle in the spacetime matter)¹ initiate sequence of DNA imprinting of structural refoundation (ie. Upon entry into Negative Terminal

¹This combination of properties cannot be realized by any 3-dimensional object in ordinary Euclidean space. Such an object can exist in certain Euclidean [3-manifolds](#).^[1] There also exist 3-dimensional solid shapes each of which, when viewed from a certain angle, appears the same as the purple, green, and yellow 2-dimensional depiction of the Penrose triangle on this page. The term "Penrose triangle" can refer to the 2-dimensional depiction or the impossible object itself.

A Penrose tiling has many remarkable properties, most notably:

- It is non-periodic, which means that it lacks any [translational symmetry](#). More informally, a shifted copy will never match the original.
- It is [self-similar](#), so the same patterns occur at larger and larger scales. Thus, the tiling can be obtained through "inflation" (or "deflation") and any finite patch from the tiling occurs infinitely many times.
- It is a [quasicrystal](#): implemented as a physical structure a Penrose tiling will produce [Bragg diffraction](#) and its diffractogram reveals both the fivefold symmetry and the underlying long range order.

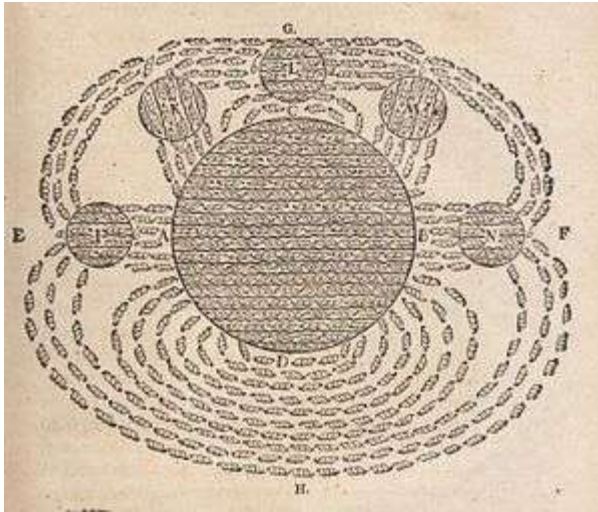
Space or the vacuum, the initial matterwavefield is imprinted in the Biocosmos'matrix memory). Note how the Penrose tiles resemble the Flower of Life and repeats itself but always in a different manner to imprint the foundation but always adding something. It is like when you save a file on your computer that is slightly different you give it a different name so now the computer holds onto the new file. Muon waves fluctuate and return repulse mechanisms acting in reflux upon the force(meaning thought waves go out and activate the dark matter in the vacuum which repulses it back into entrophic states) bio-functionally you have created a wavefield which is now present in the manifest universe that is now been filed and awaiting orders. This is what occurs bio -cosmologically when we mediate using the Merkeba.

Since it's all about angular implosions let's talk about what happens when theoretically, opposing fields attempt to occupy the same place. Well by all intents and purposes an explosion should occur, but it doesn't. It doesn't because, in any spacefield where one force is exerted upon another, the weaker of those fields will yield. The Negative terminal being without inertial forces will naturally yield that spacefield. Thus the engagement closes off and nothing out of the ordinary is perceived to have happened.

Now supposing one wished to engage the fields to stay open.

This could be accomplished by creating an ongoing vortex field which is achievable by introducing two opposing magnetic forces moving in a circular pattern within polarizational fields. This describes a double torus field.

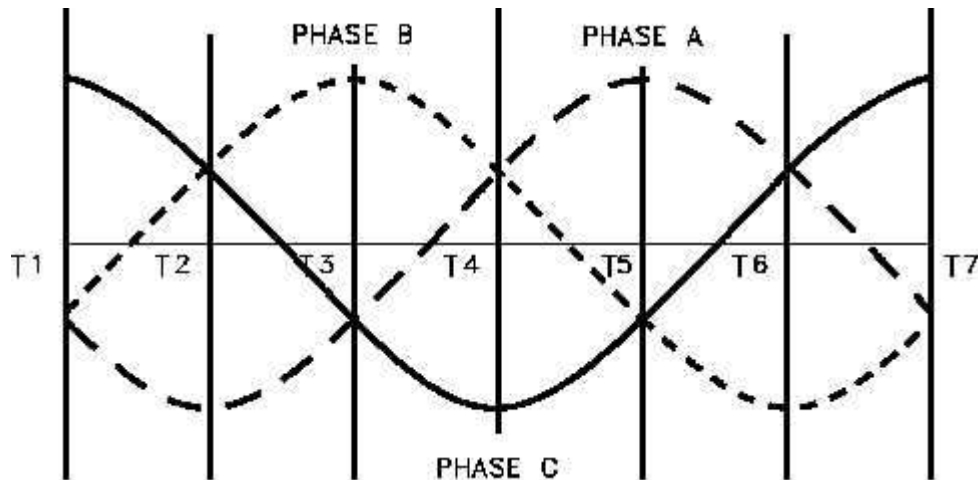
When these fields are quantumized in magnitude (ie. Three such devices all moving around one another. One in core , one in the interior and one on the exterior), a rift in Time space will occur. This rift can be made to encompass a large area field, like a Stargate, however it must be within polarizational field and magnitude of the three fields plus the magnetosphereic containment variance which must be applied.



One of the first drawings of a magnetic field, by [René Descartes](#), 1644. It illustrated his theory that magnetism was caused by the circulation of tiny helical particles, "threaded parts", through threaded pores in magnets.

The double torus merkeba is an electromagnetic bio-field which both activates the vacuum field and the physical fields at the same time much the same as the above diagram only in 4D. We can mediate using this concept to activate higher metabolic and metaphysical functions.

Thoughtwavefields move in integrated patterns according to geometric stations. Phase A is upright tetrahedron Phase B is inverted tetrahedron Phase C is conjunction to Negative terminal .

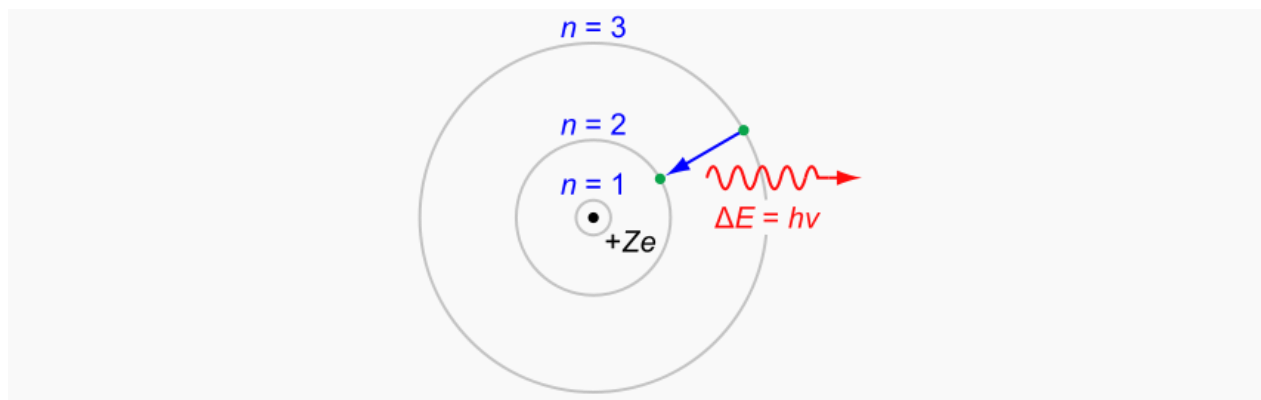


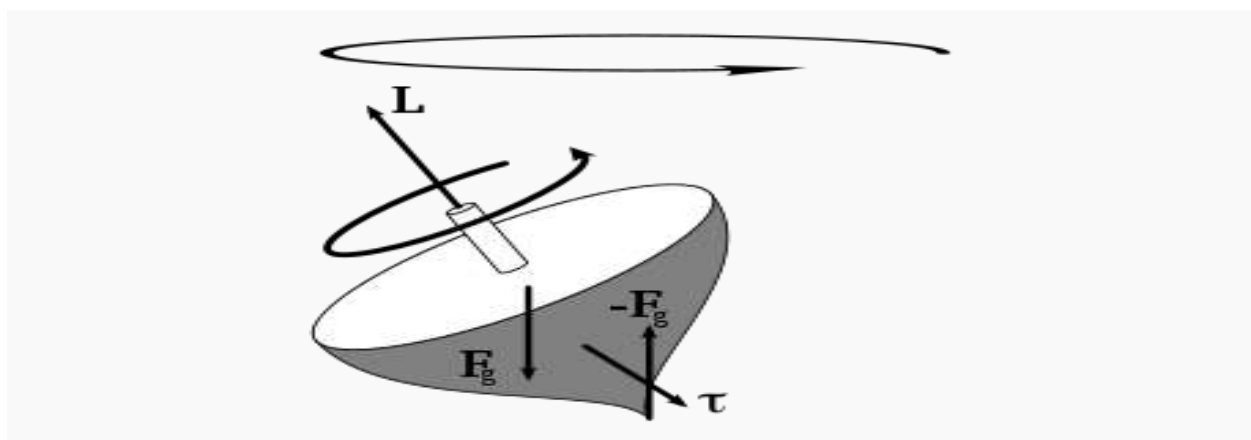
Laws of consequence or Conservation:

"It states that the total amount of [energy](#) in an [isolated system](#) remains constant over time. The total energy is said to be *conserved* over time. For an isolated system, this law means that energy can change its location within the system, and that it can change form within the system, for instance [chemical energy](#) can become [kinetic energy](#), but that energy can be neither created nor destroyed."

(en.wikipedia.org/wiki/Conservation_of_energy)

The conservation of angular momentum is used extensively in analyzing what is called *central force motion*. If the net force on some body is directed always toward some fixed point, the *center*, then there is no torque on the body with respect to the center, and so the angular momentum of the body about the center is constant. Constant angular momentum is extremely useful when dealing with the [orbits](#) of [planets](#) and [satellites](#), and also when analyzing the [Bohr model](#) of the [atom](#).ⁱ





The [torque](#) caused by the two opposing forces F_g and $-F_g$ causes a change in the angular momentum L in the direction of that torque (since torque is the time derivative of angular momentum). This causes the top to [precess](#)..

¹In [atomic physics](#), the **Bohr model**, introduced by [Niels Bohr](#) in 1913, depicts the [atom](#) as a small, positively charged [nucleus](#) surrounded by [electrons](#) that travel in circular orbits around the nucleus—similar in structure to the [solar system](#), but with [electrostatic forces](#) providing attraction, rather than [gravity](#).

Tools and Applications

The inner workings of the transformer are based on the Arc Of The Covenant and the discovery that the combination of the acid interacting in chamber with various metals and natural insulating fabric amalgamated with the abundance of heat resulted in the Arc itself began to float off the ground according to all written accounts. Tesla himself experimented with the combinations, as have many other scientists, several who have witnessed their experiments move /magnetically oppose the Earth and so appear to float on top of the ground.

My applications run along this type of thesis notwithstanding the various applicable laws that science has heretofore recognized, and just beginning to recognize. I refer to the work of Nassim Hamein.

The equation we are looking for includes another field , this field we are seeking is very close to us in the mirror dimension field which carries only a “negative

charge “per say and this dimension overlaps with our conventional universe. It is in this “overlap” space that the interesting thing happens- this field can adapt to requirements put forth by the conventional universe. When we think of a thought we organize the neurotransmitters to cooperate to actualize the electromagnetic spark(the thought then becomes manifest by the fact is it measurable energy).Still the energy came from somewhere. The plasmatic potential exists in the vacuum as Hamein suggests, and in my opinion and speculation, between the two dimensions and can be accessed through the use of increased vibrational frequency alteration.

His equation of the Swartzchild Proton gives the function of the energy available on a sub-atomic level:

$$Rs= 2GM/c^2*10^{55}$$

$$1.3*10^{13}cm=2*6.6/8.9*10 \text{ to the } 20 \text{ cm}^2/s^2*10 \text{ to the } -8cm(gm/sec^2)$$

The equation relates to the amount of Planks length energy of the Swartzchild proton in each cubic centimetre of space which gives the amount of:

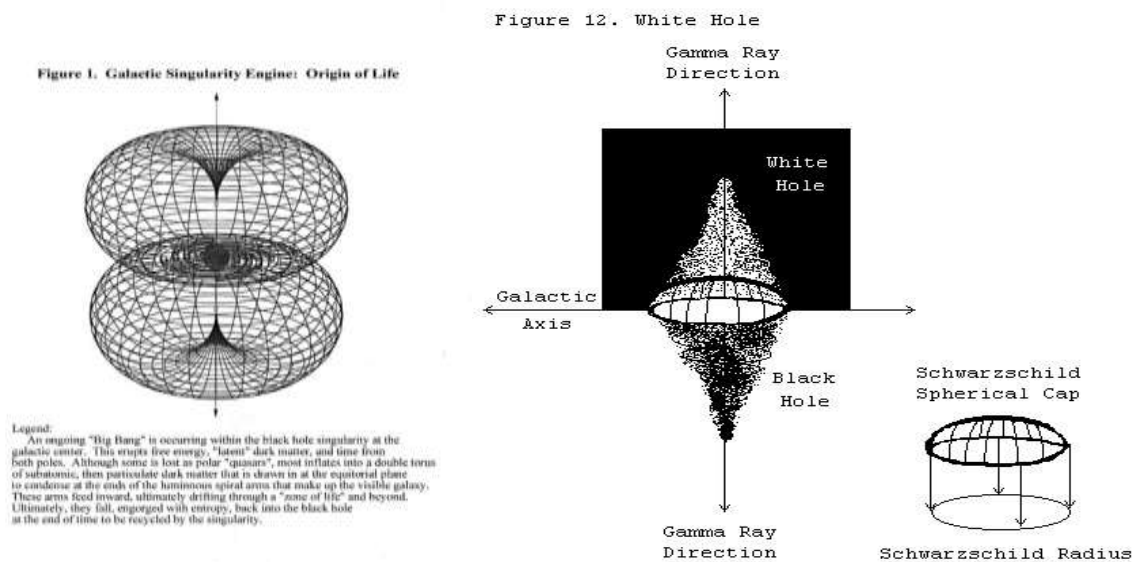
$$10^{-93}cm^3$$

“The dual torus topology occupies a central role in the spinor, twistor and quaternionic formulation. This topology appears to be ubiquitous in astrophysical and cosmological phenomena and is predicted by the U4 bubble of the affine connection in the Hamein-Rauscher solution to Einstein’s field equations. The geometric structure of the complexified Minkowski space is associated with the twistor algebra, spinor calculus, and the SUn groups of the quaternionic formalism. Hence quantum theory and relativity are related mathematically through the dual torus topology.

We have demonstrated a unique relationship of the dual torus topology to the spinor calculus, twistor algebra and the quaternionic formalism. This topology appears to be ubiquitous in Nature and may result from spacetime torque and Coriolis forces generating spin/rotation at all scales, from galactic and stellar objects, supernovae, to the weather patterns in the Earth’s atmosphere, and may even be a key to defining an electron’s path. The tori form appears to also

occupy a role in unification models through the group utilized in supersymmetry models.”

(Hamein/ Rauscher RiemannianQuaternions, Spinors and Twisters, 2010)



In my proposed experiment I wish to create a double rotating torus of magnetic flux field. From there the vortex fields will expand and move until velocity is reached to move into a gravitational sinkhole or a double toroid. (see above diagrams)

T.A.R.A.

Tesla Arduino Radiational Apparatus

A T.A.R.A. is a TESLA machine that puts out sound and light along with frequency- Magnetic magnitude creating a magnetosphere or coronal vibrance which contains energy flux fields by various means. With a twist however including a spinor flux field at three separate angles, one horizontal , one at 90° and two at 19.47° respectively from the vertical.

Objective: To create a device that can send out electromagnetic magnitude , sound, vibration, light and frequency , negative ions, and ozone which will then be able to create a electromagnetic field which would contain the environment and shape a magnetosphere, thus creating a shield which would protect the environment from harmful microwave or dissonant vibrational fields coming from space radiation. This process requires one to create a field that resonates with the original source and open a time space rift. Hyperspace travel in other words.

The spectrum lights will appear to climb toward the top as it moves through the lightening field in a tetrahedronal pattern(using mirrors and laser) as well allowing the vertical axis to send the light field upward. The magnetic resonance fields will then interact with each other and spread out to the containment cable set into the ground. It is my theory that a magnetosphereic bubble will be created containing the fields and the area footage. Enthaplic peak will occur and the entire containment field should move then through spacetime matter creating a wavefield of matter.

The Chappell Concept

The method I am intending to use within a mini magnetosphere or vacuum is the "*Chappell*" array of teeth in a neo- magnetic Halbraich triangular formation which creates a flux field of Pos+ Neg- Pos+ so the fields are constantly being attracted then repulsed. A rotating constant expanding and contracting corolis or double torrus creates a Black hole/White whole sink hole which then will move the wavefields into each other expanding and contracting much the same as in binary star fluctuations, thus the centres of each mass are entangled while particles flow from one magnetosphere to the other along its' event horizon or outer magnitude , much the same as the aura carries the energy of the body and shows the weakness and strengths of the body's systems.

Chappell Magnetic Teeth Array

(the early years...)



The forces of magnetic polarization works against each other in terms of unity and over unity -there must be material that is light enough and magnets strong enough to achieve unity. If you use repulsive energy the force is not strong enough to achieve power over your initial inductance , if you use repulse attract momentum is working against itself and law

of conservation takes over and reduces the available energy – it is still not enough. I theorize that a triangulation is necessary a pos+ neg- pos+ constitution of terminal magnitude creates a quantumized effect thus causing unity and eventually overunity. In utilizing the triangulation field we find that a double spinning torid would create a twisted (twistor wavefield) magnetic flux similar to that of a DNA strand that would cause magnetospheric conditions.

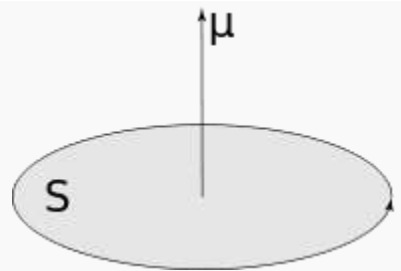
I have designed the Chappell array formation that will allow magnetic teeth to cause circular magnets to spin, repulsing and attracting each other as it should maintain the magnetic equilibrium while also expanding and contracting the magnetic polarization. It consists of sixteen magnets with six north pointing faces and six south pointing faces of square magnets glued together to form a diamond shape in a Halbraich diamond formation. Then the ends are inlaid into the material of your circular wheel. As the magnets spin a sine wave is created by the shape of the magnetic fields, very similar to the DNA structure only circular. When two of these wave fields interact one will have alternative energy. When four of these fields interact we should hyperspace travel.

“The magnetic field produced by a magnet is proportional to its magnetic moment as well. More precisely, the term *magnetic moment* normally refers to a system's **magnetic dipole moment**, which produces the first term in the [multipole expansion](#) of a general magnetic field. The [dipole](#) component of an object's magnetic field is symmetric about the direction of its magnetic dipole moment, and decreases as the inverse cube of the distance from the object...

For example, the magnetic moment produced by an electric charge moving along a circular path is

$$\mathbf{m} = \frac{1}{2} q \mathbf{r} \times \mathbf{v},$$

Current loop definition



Moment μ of a planar current having magnitude I and enclosing an area S .

Suppose a planar closed loop carries an [electric current](#) I and has [vector area](#) \mathbf{S} (x, y , and z coordinates of this vector are the areas of projections of the loop onto the yz , zx , and xy planes). Its magnetic moment \mathbf{m} , [vector](#), is defined as:

$$\mathbf{m} = I\mathbf{S}.$$

If the loop is not planar, the moment is given as

$$\mathbf{m} = \frac{I}{2} \int \mathbf{r} \times d\mathbf{r}.$$

where \times is the [vector cross product](#). In the most general case of an arbitrary current distribution in space, the magnetic moment of such a distribution can be found from the following equation:

$$\mathbf{m} = \frac{1}{2} \int \mathbf{r} \times \mathbf{J} dV,$$

where \mathbf{r} is the position vector pointing from the origin to the location of the volume element, and \mathbf{J} is the [current density](#) vector at that location.

Quantum angular momentum is applied here:

The [classical definition of angular momentum](#) is $\mathbf{L} = \mathbf{r} \times \mathbf{p}$. This can be carried over to quantum mechanics, by reinterpreting \mathbf{r} as the quantum [position operator](#) and \mathbf{p} as the quantum [momentum operator](#). \mathbf{L} is then an [operator](#), specifically called the *orbital angular momentum operator* “

In His paper, quaternions, spinors and twistors Hamein discusses what happens in a double torrid field describing a “five dimension 4- component spinor calculus” which accounts for the coupling of the electromagnetic fields which gives the five dimensional spinor field to curved space of the gravitational Riemannian metric. Using projection geometry much the same as Penrose tiling effects to relate the five dimensional spinor fields to four dimensional twistor space.

The details of the papers are highly qualified and complex examining the cause and effects of these double torrus dynamics and prepare the reader for quantum effects.

We would now concur with obvious –that bio-beneficial experimentation is highly important and imperative for the purposes of science, energy conservation , potential space travel and the very survival of life as we know it.

Mass is inverted where two dimensions meet or interact and *implodes* thus creating a quantumized “ leap” or jump function along a vector field. Particles move with the force of gravity and light quantumized . Forces implode when opposing fields are presented in the same moment in the same field occupation. Geometric fractals(of matter and energy) express through vector lines of force according to Law of Conservation in the positive terminal space and through radiational force expression in the negative terminal space- light speed moving through a non- entropy field that acts like a vacuum to literally “ suck up” the matter field and the vector scalar field presents- amplified by quantumized muon- matter waves.

Grid complexes express as 100 Light square years per unit. We believe moving in this field causes a cylindrical field , so we use the Reynolds’ factor to compute

Fluid flow in a pipe crosses the threshold from laminar to turbulent flow when a dimensionless parameter called "Reynolds' Number" ("Re") reaches about 2000. It is defined as

$$Re = \rho l v / \eta$$

Where v is the velocity of the fluid* and l is the characteristic "length" **of the pipe: its diameter. Re is essentially the ratio of the inertial forces (tending to keep the fluid flowing) to the viscous forces (tending to slow the motion due to contact with adjacent layers) experienced by a layer of fluid. Re can also be expressed as the ratio of viscous diffusion time (the time required for effects to diffuse through fluid layers) to eddy advection time (the time required for eddies or vortices to form).

*or elastic plasmic field

** Distance to travel

I use this equation to relate the experience of wormhole travel which is most likely to only way for us to travel into galactic or interstellar space. The Laws that govern Spacetimematter will quite likely be the same in most fields once the density of the environment is calculated.

Now consider the actions of the muon waves jumping. It is understood through this action that particles that strike each other at 90% angles from the parent signal wave can jump into non visible wavelength fields or dimensions. Neutrinos that do this seem to disappear and then re-appear. Why?

I speculate that it is due to repulsion implosion. Enthalpic peak of wavefield "shakes up" the particles separating it's tiny components and bundling them very tightly into themselves which then causes the implosion to occur. Then a vacuum of sorts begins to develop as light energy moves to fill the space that was previously occupied by the component particles. This is where and when the two fields spark each other by mutual attraction. They overlap very briefly and exchange frequency and matter fields. The negative charged electrons from the positive terminal space is repulsed by the negative terminal space-antimatter-field and creating the repulse action to move particles into both fields.

Biocosmological Connections

Biocosmology is the science of the interconnectedness of all things. Not just people, places or things, but substances as well. We consider ourselves to be individual and this is quite true in the classic sense. However since space can bend, ripple and twist while it shapes the cosmos then it makes sense that we can too.

Space warps with cosmological laws making adjustments automatically to stimulus and matter flexes with it.

Time slows down as flux occurs in any containment field or Mass. Space molds to the direction of intent and travel. Timespacematter being of the same entity gives one the sense that is truly cognizant that it is quite possibly a cosmic consciousness or at least the imprint of that consciousness. Much the same as scientists have discovered that the matter encased in a blackhole is imprinted on the corona of it somewhat as if the signal of the informational data that is absorbed by the blackhole is still available and active externally. Again we see here that one particle or piece of information has a counterpart that it is entangled with.

Gravity expressed as it is warps space by matter waves which curves spacetime fabric. A spinning blackhole twists space along behind it leaving a wormhole tunneling effect curvature expressing activated matter. The internal spiral will continually attempt to resolve itself. The action of this spinning movement charges or activates the magnetic flux in Timespacematter thus creating a wormhole that can be found again. We take note of the Fibonacci sequence or the golden ratio (1.618...) repeating in every natural spiral found. This significant discovery points to the substantiation of the biocosmological axiom that all things in biological nature will grow according to the DNA structure of the building blocks from which it has sprung. In other words we all spring from the same substances and so we are biologically and magnetically entangled with each other.

The only action required to spark the entanglement is to.. magnetically interact.

Particle Space Travel

Yes, space travels. Space is continually expanding exponentially. It is a moving force. When the Big Bang occurred, if it occurred, the explosion created a firing flux of biological material radiating with nuclear force. That force is still radiating and travelling and is as much a part of Spacetime matter as the matter we can see.

Again I say, Space is travelling as we are with it. Our particles are part of it as well since we were all at a one time purely matter. Spacetime fabric is potentially either activated or inactivated. Upon interaction with stimuli Spacetime fabric activates dormant magnetic polarities within it and within the Mass or matter with which it is interacting. Both types of particles then magnetically spark each other causing Spacetime matter to be activated. This is when, I believe, biocosmological connections present a pulse to the rest of the universe which is then “downloaded” as it were by the cosmic consciousness of the universe itself. It is like the data has been presented, acknowledged and filed for further investigation.

By this premise, Dark Energy is thus inactivated Spacetime matter. We find this phenomena different from the blackhole which is currently condensed matter and gravity. The explanation of Dark Matter is difficult when we think of all that space between planets and galaxies and $\frac{3}{4}$ of it is Dark Matter. Yet again I liken the image of this to a molecule. Microscopically, there is much more space in a molecule than particles which is a fair analogy. As above so below, as within so without.

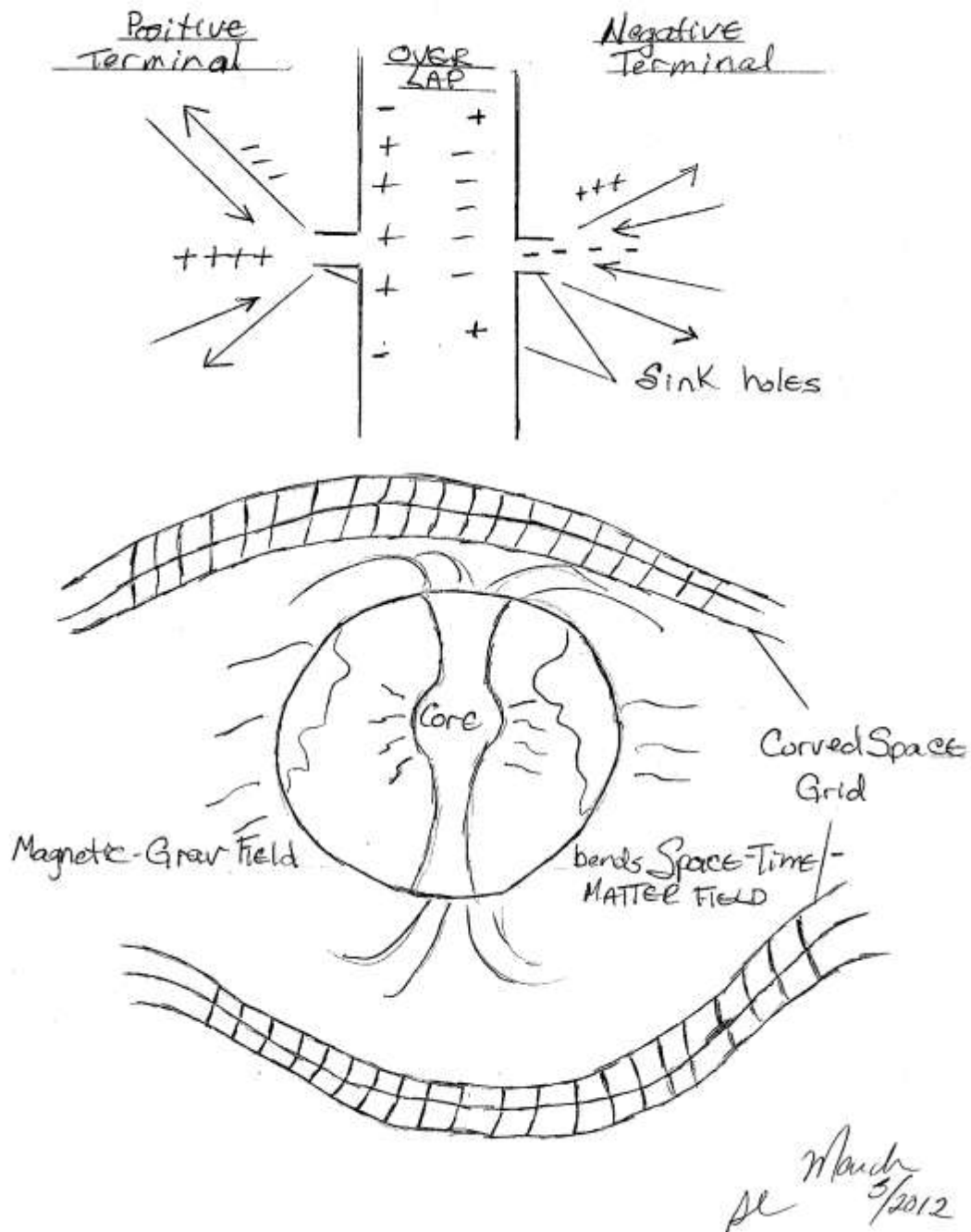
Inactivated spacetime matter is like the protons, neutrons and positrons drifting around without the electrons to magnetically hold the molecule together: that combination would be repulsed by each other. It is a theory worth looking at.

To fold space we have to learn what folding ourselves is like. Here we look at geometric combinations. Physicist Nassim Hameed has come up with a design which he believes demonstrates the Flower of Life design which really is what happens to the particles of our building blocks once they magnetically spark each other and amalgamate to form DNA structure. I think he is right. He superimposes 20 tetrahedrons and presents a complex but composed

diagram of a self modulating geometric structure that does what I call self-feed or self generate. I believe this structure is the fractal geometric pattern that matter disintegrates into when entering the negative terminal and also will then reintegrate into when entering into the positive terminal Spacetimematter field, in as such as demonstrating the wavefield of the DNA .

When we look at this geometric pattern it seems resolve itself. I project that *if we are able to reconstruct this same pattern energetically I believe matter can and would change form.*

GravWavefields



Time Formulations

Mass slows things down. Literally, the density of mass causes the entropy to occur in conjunction with the force of gravity. Now gravity exists differently in different places, however that does not mean that Spacetimematter acts differently because of gravity. The ratio of gravity to matter (mass of planet) to spacefield is always the same. For every 1 lb. of wavefield grav-matter, there is 10 metres of Spacetimematter that it can fall through(or move through) per second. That means that whatever the density of gravity on any planet one calculates the wavefields based on the mass of the planet meaning how dense is the gravity on the surface, its' core magnetics, its' distance from its' Sun, and of course, whether or not grav –waves are congruent with its' size. As in the case of the Planet Mercury, whose surface material has been blown apart and its' core is all that can be seen, yet its' gravitational force is still that of a planet which is bigger and contains more material. This fact shows us what?

This is so significant I wonder if anyone else has pondered this.

The planet Mercury, according to physicist Dr. Brian Greene in his televised show of The Cosmos shows us that the planet itself has been destroyed but its' gravitational pull is the same as if it wasn't harmed at all. Which brings me to my point... Energy cannot be created or destroyed. All that was will be again, only in another form. The core of Mercury sustains a gravity of that of a larger planet and will continue to do so to maintain the equilibrium of the solar system as it was meant to do from its' beginning. In other words, whatever happened to Mercury could happen to the Earth itself but *it would not change the galactic equilibrium that Earth carries.*

The interconnectedness of all things.

Yes this affects Time also. Since Timespacematter are one of the same phenomena. Past, present, future. Are all the same wavefield only different perspectives of it. Think of it as a Equilateral triangle and as a tri-pyramid at 60° at each corner. Now the cosine and tan fields are the same and so therefore sine equally. Mass slows time. The Timespacematter field that is moving through that space gets interrupted by Mass and/or energy (Stars) causing entropy that allows us to perceive time as a moment to moment

experience. Yet it is really happening on all dimensional levels and acting differently in different places. What does that tell us? That time is a program, not a construct and so therefore can be manipulated.

Since thoughts are energy and energy cannot be created or destroyed it stands to reason that energy can change form. The energy that causes the thought forms to exist in matter field existed in DARK MATTER. Dark matter does not exist in our thoughts alone but can manifest as thought forms as it congregates conceptualization that could be manifest with potential application.

So entropy in a gravity environment slows time down as it interacts with matter. It is moving along with the rest of Spacetime matter at the speed of light and suddenly spacetime matter warps due to interacting with the gravity and magnetic field of a planet or Sun.

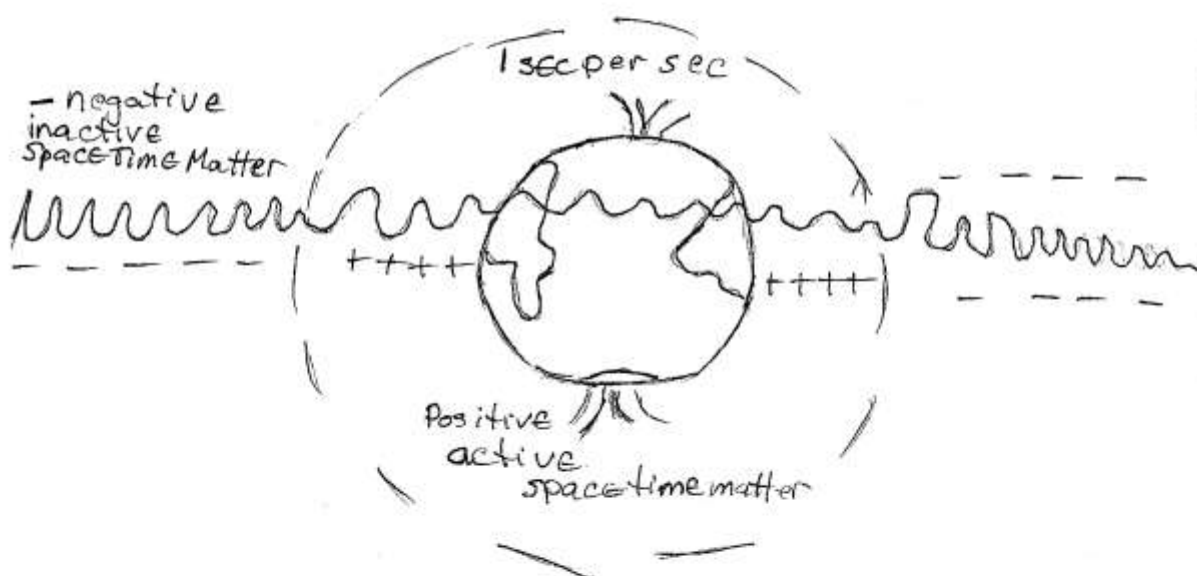
It is traveling in neutral space until it becomes activated by the magnetic interaction. I see it as being in neg- neg- positive+ state wavefield but as soon as it comes into activation field it becomes neg- pos+ pos+ thus slowing down in a gravitational matter field. This allows us to experience time as a moment to moment occurrence. It bends just like space and moves in and out of dimensions. It is part of and creates a Grav- Space- Time- Matter flux field according to the biomagnetic corona of the Earth (or mass it is interacting with).

When it is in slowed down state it acts more like particle being tangible and when it speeds up it acts more like a wavefield. Like the peeling of a banana time unfolds through Spacetime matter and through antimatter or as I call it The Mirror dimension.

Probability ripple waves is the key to time reversal and projection.

Quantum leaps function the same as muon wave frequency so why not time as it is also a wavefield that moves similarly to a lightwave.

Time Wave Field



March 5/2012
sc

Electromagnetism

The lode stone was once a sign of Power. Those who had one were considered special or shamanic often times. For it magically always pointed North! Of course we know what the material is -ferrous rock, yet it is still a magical thing to a child when they first see a magnet work. It is much the same to us when we look to Polaris, the North Star. It is the only star in the sky that seems never to move. Magically we always know it points to the north and is our guide toward the centre of our galaxy.

Magnetics refer to opposites yin/yang, black/white, positive /negative and how they either repulse or attract. As we have discussed all building blocks of biological nature contain magnetic charges and goes for everything we know of. Even in the greater universe particles are attracted by gravity and magnetic attraction. This is why I say that the universe is driven by magnetics.

Electromagnetism can be healing or harmful depending on the frequency. All magnets carry charge, amplitude, double polarity and a magnitude- how much umph does it have and from how far away?

We can calculate the angle of magnitude for any magnet at rest. But what happens when the magnet is spinning and in particular when it is circular and spinning? This is my exploration.

We attempt to simulate the Earth by creating a core magnetic field surrounded by matter.

Nikola Tesla who I ascribe to be the Father of Electromagnetism knew this to be the only safe manner of delivery of magnetic power as the Earth Herself demonstrated this. But the most important thing he gave us is not electricity it is *resonance*.

For actually, resonance is what entanglement is all about. Resonance is a mathematical equation and can be measured in lengths and circumferences, but it is much more than that. It is really about frequency harmonization and can be likened to octave scales. For musicians the perfect fifth is a harmonic repeating constant much like the Fibernacii sequence of music. It resonates and can be amplified by shape and crystalline structures such as the tetrahedron or in peizo strip. Resonance feedback frequency affects biological tissue and matter. But like I said some of it can be harmful and some can be healing. Tesla Coil technology made with windings of copper wire using a primary and secondary coils and that being that the primary is exactly

75% shorter than the secondary creates resonance if they are within polarity field. This type of resonance creates negative ions and is highly beneficial to biological beings. Teslas' idea to use the power in the ionosphere to power the Earth was turned around and made into a weapon through changing the frequency to microwaves. In order to neutralize these waves we must cause a resonance to cancel it out. Bio-frequency resonance operates at Bflat, stimulates the pineal gland and give a sense of well being. Microwaves destroy biological tissue actually cooks it , causes Earthquakes and makes people war like and angry.

In order to counterbalance this we create a magnetic field which can cancel out the harmful waves. We can do this by using the Halbrack array formation in a circular form and cause these circular magnetic structures to spin opposing each other. Not only will this operate as a mini-magnetospheric shield but gravity will no longer affect the interior space or the vortex that is created by this action.

My research has shown the byproducts of the effects of magnetic fields strongly suggest further research and testing. Ozone, capturable energy, negative ions, and a magnetosphere are all created by the resonance field.

Our ozone has been depleted and holes continue to rip all over the planet, creating ozone can only help this, of course only in open spaces as in enclosed spaces it is poisonous, energy can be captured and stored or used, negative ions create a slightly heightened awareness in human beings and a sense of wellbeing and a magnetosphere is needed to contain the fields.

Singularity

Each event, timeframe, physical manifestation, star planet person or thing can be considered a singularity. Something unto itself, considered a separate entity from other perspectives and beings.

All this is necessary in order to scrutinize a singularity or event. Yet this perspective is hindered by the perception of separateness. Truthfully since all things are interconnected singularity is an illusion- but an important one.

That being said one must come to terms with events and phenomena that heretofore one had no knowledge of previously liken my perception of singularity to this as such.

Each cell in the body is a singularity made of other singularities each of which will eventually collectively evolve into something else. But only when it is ready. It is the Law of Evolution and the survival of the fittest that causes us to grow and change according to our environment. Each cell works harmoniously or does what it has been programmed to do. It is a map of the greater universe and demonstrates the dynamic of how singularities are meant to work separately but together.

The Law of Evolvment shows us that each individual will follow the stages of growth set out in physical manifestation and spiritual awareness until such time that they reach their Entirety.

There are many theories about multi-universes and potential dimensions wherein various other parallel universes exist. I personally have seen visions of myself doing other things-three at once in fact while in a awakened state. The strange thing was that we looked at each other and I knew the other person that was me was seeing me as I was seeing her.

Since then I have theorized that Entirety is the manifestation of all levels both physical and non physical planes at the highest developmental evolutionary state of all of us. Meaning all of me -of all the me's in every dimension in every time frame in every universe. When that happens, I may become a divine being or maybe a Star or maybe both. Some refer to this consciousness as Star consciousness. The entirety of our whole consciousness exists separately in many forms and dimensions as we travel and work our way through the Trees of Life which encompass all the different aspects of the stages of growth from demonic to angelic levels and everything in between> all

incarnations work towards the evolvement of the species both personally and collectively.

I liken my experience in this drama called my life as being a cell in the huge body called the universe who guides me and means that I will be guided by the needs of the One and the many.

I am a singular entirety. I am All of Us.

Formulas of Intent

These formulas are important to the concepts I have introduced to express the requirements of moving into the vacuum field. Firstly we look to magnetic permeability.

$$\mu_0 = 4\pi \times \frac{10^{-7} \text{m}}{\text{A}}$$

Unpaired electrons each with a half spin and magnetic moment.

$$M = g\mu_B \hat{S}/\hbar$$

Where:

$M \rightarrow$ = molecular weight moving

μ = sigma Stephan-Boltzmann constant ($5.67 \times 10^{-8} \text{w/m}^2 \text{K}^4$)

$M\beta = e\hbar/2m_e = 5.79 \times 10^{-4} \text{ eV T}^{-1}$ (electronic volts \times Teslas)

m_e = mass of electron

$\hat{S} = \hbar \vec{\sigma}/2$ *electronic spin operator moving* and $\vec{\sigma} \xrightarrow{\text{yields}} \sigma_x, \sigma_y, \sigma_z$

g = Lande g-factor

\hbar = Planks constant

When an electron is in a magnetic field $\beta \rightarrow$ the interaction between the magnetic moment and $\beta \rightarrow$ gives rise to the energy force :

$$U = - \vec{M} \times \beta = g\mu_B m\beta$$

Where:

U = potential energy

$M \rightarrow$ = moles/mass

β = magnetic field (force/current)

$m^s = \pm \frac{1}{2}$ magnetic quadrant spin #

g = Lande factor

μ = Boltzmann

\hbar = Planks constant angular momentum ($6.626 \times 10^{-23} \text{ J}^s$)

Lande factor- electrons with both spin and angular momentum when electrons are placed in a magnetic field quantum degeneration is lifted (no longer applies) 1st order perturbation in this condition presents as g factor

$$J = g_L J(j+1) - S(S+1) + L+1/2 J(J+1)$$

$$g_s J(J+1) + S(S+1) - L(L+1)/2 J(J+1)$$

Then orbital g -factor is equal to 1 and g_s is equal to 2 simplified as:

$$g_J \approx 3/2 + S(S+1) - L(l+1)/2 J(J+1)$$

Where:

J = total electronic angular momentum

L = orbital angular momentum

S = spin angular momentum

As $S = \frac{1}{2}$ electronic spin the formula is often written as $\frac{3}{4}$ in place of $(S+1)$ while g_s and g_l are other g -factors of electrons.

For the total atomic angular momentum:

$$F = I + J$$

$$\begin{aligned} g_J F &= (F + 1) - I(I + 1) + \frac{J(J + 1)}{2F(F + 1)} + g_L I F(F + 1) + I(I + 1) - \frac{J(J + 1)}{2F(F + 1)} \\ &\approx g_J F(F + 1) - I(I + 1) + \frac{J(J + 1)}{2F(F + 1)} \end{aligned}$$

g_l is $\frac{1}{2}$ g_J by the ratio of electron mass to proton mass. The energy difference is therefore:

$$E = \delta U = g \mu b \beta$$

Where:

E=energy

δ =instantaneous rate of change

U= potential energy/rate of revolution

b= intercept of linear graph (mass /time)

β = magnetic field

g= Lande factor

In a constant magnetic the lower levels are mere density, however if a higher frequency of resonance is introduced (radio, microwave or Tesla) this oscillator will induce transitions to higher states. If resonance is satisfied;

$$hV = E g \mu b \beta$$

Where:

V= velocity

(others already noted).

This increases the spin fluctuations and variances. This mechanism releases dissipations called relaxation processes (like it is breathing in and out) via thermal pulses or vibrations of the crystal lattice that is called spin lattice relaxation. This provides a magnetic lattice magnetosphere within which electrons can migrate between unpaired electrons.

Time Independent Schrodinger Equation:

$$E\Psi = \hat{H}\Psi$$

Where:

E=total energy (proportionality constant)

Ψ = wave function

\hat{H} = Hamiltonian raised to highest degree

These concept can assist us to formulate designs for moving into timewavefields.

Since our awareness is in a continual now position we need to rethink how time moves. The ripple is caused by our moving forward in time but you turned a water ripple on its' side like an arc you can then see how part of it is above the water and part of it is below the water. It is moving slower where we can see it and faster where we cannot. If we are able to move into another dimensional field we could also then move through time very quickly.

My formula which is the initial application ,using Schrodinger's' continuity probability equation with the concept that t-time Cartesian coordinates begin where the X and Y axis meet at the value of 0.0 meaning time placement on the wavefunction.

To move into an non- entrophic field we consider the variances; the particles moving into a non- entrophic state therefore must be moving at a double negative wavefunction.

This means that when a particle moves into non-entrophic fields it's time frame speeds up quantumly.

Orbit:

$$Fg = \frac{G \times m_1 m_2}{g}$$

F= Force (Newtons' law- $9.81\text{m/s}_2 \times$ centrifugal acceleration or acceleration due to gravity)

G= Gravity Nm_2/kg_2

m_1 = initial mass

m_2 = secondary mass /radius of planet

g= Lande factor

Arc:

$$R = V\sigma \frac{\sin\delta\Phi}{g\lambda}$$

Where:

R= radiancy

V= Volume (m³)

σ =stress (or electrical) conductivity

\sin =angle of interior

δ =displacement

Φ = Phi- electrical potential

g= acceleration due to gravity

λ = wavefield or function

Ripple:

$$C = \sqrt{\times g\gamma/2} \tan \hbar^2 d/\lambda$$

Where:

C= constant of integration

g= acceleration due to gravity

γ =(gamma) strain or Lorentz factor

= Pi 3.14

Tan=angle of defraction

\hbar = planks constant

d=distance

λ = wavelength or field

Lorenz Factor Force :

$$F = q(E + V \times B)$$

Where:

F=force

E=electric field (volts per metre)

B= Magnetic field (in Teslas)

q=electric charge of particles

V=instantaneous velocity (Columbs) of particles

X=Vector crosspoint

$$F = q[c \nabla \phi + V \times (\nabla \times A)]$$

∇ and $\nabla \times$ are gradient and curl operators, A and ϕ are magnetic vector potential and electrostatic potential

$$E = -\nabla \phi - \frac{\partial A}{\partial t}$$

$$B = \nabla \times A$$

Magnetic force:

$$F = q(V \times B)$$

Contour:

$$\Sigma(t)$$

$\Sigma(t)$ =surface bound by closed contour

t=time

Trajectory of a particle with charge under the influence of a magnetic field given a loop in a magnetic field:

Faradays' Law of Induction:

$$E = \frac{d\phi_B}{dt}$$

Where:

E=electromotive force

ϕ_B =magnetic flux loop

t=time

d= distance

$$E = \oint \Sigma(t) dl \times F / q = \oint \Sigma(t) dl \times (F + V \times B)$$

dl is a vector element of the curve $\Sigma(t)$.

Time Independent Particles:

$$\hat{H}\Psi = E\Psi$$

The Hamiltonian is the Legendre transform of the Lagrangian for Cartesian coordinates and generalized momenta in circular polar coordinates corresponding to angular velocity (physical angular momenta). These are a presentation of the same symplectic manifolds. For three dimensions in a wavefunction;

$$H(q, p, t) = \sum_i \dot{q}_i p_i - L(q, \dot{q}, t)$$

H=total energy

E=T+V

Where:

L=angular momentum

H=Hamiltonian (enthalpic momentum× length× moment of inertia× angular velocity

q=charge

j=coordinate

Forms of Hamiltonian with corresponding Schrodinger equations of wavefunction:

$$\hat{H} = \sum_{n=1}^N$$

$$\hat{p}_n \times p_n / 2m + V(r_1, r_2 \dots r)$$

Where:

N=natural number

n=1

\mathbb{Z} = continuation of integers

p=projective plane

m=mass

V=velocity (for generalized velocity, there is one corresponding conjugate momentm)

$$p_j = \partial L / \partial \dot{q}_j$$

Where:

\dot{q}_j =placeholder for argument of a function(dot above letter signifies this) with respect to time

$$\partial = a \text{ derivative of } \dots$$

r= radius

Position of particle i corresponds to Cartesian cross point coordinates

$$x_i, y_i, z_i$$

$$\Psi = \psi(r, t)$$

Spacetime derivatives with harmonic oscillator (for hydrogen atom)

$$E = \psi = \hbar^2 / 2m \nabla^2 \psi - e^2 / 4 r_0^e \psi$$

Where;

T=0 placement on Cartesian graph

= energy of proton

r_0^e = radius of electric constant

i=x basis of Cartesian coordinate

∇ = rate of change

$$i\hbar \frac{\partial \psi}{\partial t} = \hbar^2 / 2m (\partial^2 \psi / \partial x^2 + \partial^2 \psi / \partial y^2 + \partial^2 \psi / \partial z^2) + V(x, y, z, t) \psi$$

Where:

$\Psi = (x, y, z, 0)$ coordinates

Time reversal symmetry: complex conjugate waves move in opposite directions: if $\psi(x, t)$ then $\psi(x, -t)$. Arbitrary constant values are a set of points discussing boundaries and sets up a step potential which are consistent with probability conservation derives the continuity equation for probability;

$$\frac{\partial}{\partial t} p(r, t) + \nabla j = 0$$

Where:

$$p = |\psi|^2 = \psi^*(r, t) \psi(r, t)$$

is the probability density (probability per unit volume * denotes complex conjugate) and electric charge density and:

$$j = \frac{i\hbar}{2m} (\psi \nabla \psi^* - \psi^* \nabla \psi)$$

is the probability current flow.

To move into a non-entropic field we consider the variance particles moving into other dimensional states as quantum acceleration.

T^1 - time coordinate always beginning with 0.0

TD- time dimension field, quantumized time.

Unit constant: $t^1 = 1$ sec per sec normal time

$$TD = \frac{\partial}{\partial t^1} p(r, t) \times \nabla j \downarrow$$

Where:

∂t^1 = derivative of time (1 sec)

r = radius

\downarrow = prepositional logic – A is true if B is true

So we find :

$$t^1 r / \partial \times \frac{\partial s}{s} \psi \nabla j$$

$$j = \frac{i\hbar}{2qvm} \psi_t$$

Where:

j = cartesian coordinate

i = x basis for coordinate

q = charge of particle

v = instantaneous velocity

m = mass

Time moves at different speeds in variant Timespacematter fields. Given this, we explore time- flux variant temperaments in quantum fields (ie. in other

dimensions). When in light- fields time moves faster when in matter- fields time moves slower.

We believe that time moves as a triangulation wavefield moving in and out of (timespace)matter –field but always in conjuncture with its opposite wave. So similar to the meobis strip the wave is always moving both forward and backward creating a neutral state which creates the time now. Since this wave is like a continual wave we conclude that time is not a construct but like gravity is an effect upon the matter field. However, as such to make alternate waves such as in the angular momentum created by oscillating magnetic fields we forego past concepts as that time is like a rubber band but iterate that time can fluctuate in its appearances and derivative therefore we know now that time can be manipulated. Given this we advance the theory that time is also an aspect of Timespacematter and its' appearance as a measure is no longer valid. For example, when one is young time seems to move ever so slowly but as an adult time can move quickly as we spend our days engrossed in our work. This leads to the conclusion that time is relative according to the perceiver. It is this authors' perception that one can alter timeframes according to the enthalpic energy projected into the wavefield. Similar to tetrahedron and merkeba mediation one uses geometric shapes to affect our environment. My research has concluded that the great pyramid is the great construct of time. This is the reason for my theory of quantum time forces.

Since three is the basis for foundation we observe thatthus variance works in all procedures from the bonding of cells to the extension of the magnetosphere of binary stars. Again the visible connection is with two or four however the actual connection of sustenance or substance remains a triangulation of energies which naturally seek another to pair with thus causing the need to re-establish bonding.(ie. need to satisfy is created by triangulation of cellular activity), thus life is spurred to create anew. If magnetic attraction satisfies itself there is no need to seek another solution so the concept of three forces interacting continues to be the new thinking of the future. They say that love creates all life but I say that love wishing to extend it's vibration is the cause of life. So we have a continuous wavefield that conjoins along a curve we call reality of what we perceive as the now.

So t^1 is a moment in time while t^3 initiates inertia as time manifold integrates with frequency velocity:

$$\vec{t}^3 / FVM$$

Which quantizes by $\oint Re_v$ (limitless) as time moles fracturize into tri-vector planes of geometric quantum fields. Variations of real-time t^1 moments initialize when three time fields (past, present, future) collide and unify. This then constitutes the reality time coordinate wavefield I call

$$\vec{T}^1$$

This time coordinate is in real time and will flow in real time, present as real time which does not disturb orbit or wavefield but can be varied by external forces. Once the moment is recognised and magnetizes into our reality scope is becomes activated Timespacematter. To change the frequency of this wavefield one needs to affect one or more of the three aspects that makeup this wavefield.

Aspects of time manifold:

A) Quantum time field : $T^{1\infty} c 10^{93} cm^3$

B) Regulated time : t^1

C) Non activated time: $-t^1$

D) Activated time field + t^3

In a non-entrophic field time moves faster than we normally perceive it. Matter causes things to slow down and so too does magnetic interaction cause energy or matter to quantize/ fixate . Liken the experience to that of water in all it's states. Water is the mixture of 2 hydrogen molecules and one oxygen molecule and can exist in three states; vapour(transitional) liquid (activated) and frozen (non- activated) .

The plasmatic potential which permeates the vacuum state and our bodies carves out for us our thought forms and make them manifest as operable context. We think a thought, we charge the water of our thought and through neurotransmitters the plasma is now permeated with that water and the

intent of that water. So therefore the transitional form of the thought has come through another dimension into our reality by means of osmosis.

Which brings me to my point. Since water is the primary building block of all biological beings it must therefore be the means through which we can transfer data or matter without corruption with the ability to disassemble/reassemble.

Water is the key element of intergalactic and localised transference of energy and Timespacematter. Magnetization is external force which activates the field. Since all water moles have positive and negative polarities, magnetic functions have affect upon it. Water responds to magnetic force so therefore we see that magnetized water in a quantized field can affect timeframes, data and the speed in which it occurs or is downloaded. Matter imploding is the same as time imploding which is why I refer to these fields as one concept: Timespacematter.

According to Nassim Hamein space fluxes with infinite energy (inactivated Timespacematter) and complexity increases dimensional fluctuations and variant modulations. In fractal graphic theory, a proton is like a mini black hole and it's total mass is equal to the *strong force* referred to which calculate gravity and momentum of the Schwartzchild proton moving at the speed of light. His formula that calculates the total energy density of Timespacematter (which includes the mass of the universe relative to the size of Timespacematter being measured is:

$$10^{93} \text{ grams per } 1\text{cm}^3 \text{ of space energy density}$$

His calculations have been scaled to large masses such as stars and galaxies and this elegant equation finds true for all universal masses. Timespacematter can now be calculated according to matter mass but does not calculate its' infinite energy potential.

The particle known as the "God particle"(Micheal Hysson) suggests fundamental patterns of divisions of the smallest particle found which of course is only relative to our increasing technologies. A new microscope has been purchased by the University of Victoria that will show even smaller

particles than previously known of. Fractal geometries of particles have angular momentum, velocity, mass and force which present force vectors. At the atomic level, space takes up 99% of all matter so whatever the compounds are that make up that matter is influenced by variant fluctuations in Timespacematter.

Mathematical Context:

Dot: initial matrix position . 0= dimensionless (shows initiation of a thought; I am)

.

Line= 1st dimension- (shows intention towards a definition ; I go)

Circle= 2nd dimension (shows contextual manifestation meaning; I go to produce)

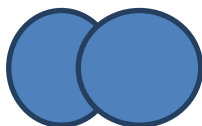
○

Sphere= 3rd dimension (shows production of initial thought manifestation; I am and I am creating now)



Sphere filled in= 4th dimension (shows internal manifestational interaction)

Double sphere connected at radius(spheres overlap)= 5th dimension (shows interdimensional interaction to produce



Each point or geometric pattern or shape contains all information and energy which is contained in the universe.

In Calabial space, gravitation is fundamental as a universal force. When we ask ourselves what is moving the galaxies we conclude that action/interaction, attraction/repulsion, contraction/expansion, entropy/centrifugal compaction are the main drives making matter move. We also include the production of spin foam integers which are numbered values of foam/space which re-establishes Penrose vector fields in other dimensions of entanglement.

Matter is the separation of the perception of the compartmentalizing of Timespacematter. If the strong force represents the 96% of uncalculated field energies or force magnitude of Timespacematter then I conclude that Dark Energy is inactivated matter in its' Schwarzschild protonic wave and deactivated matter in its' normal protonic state is Dark matter, taking note that the Schwarzschildproton creates a 39 times magnitude increase of energy-matter flux density than the normal proton.

To express the differential geometry expressing tangent vectors in a manifold of tangent space we recognise that all tangent spaces have the same dimensional field equal to the manifold dimension. So referring to a sphere, one conjugates a Point 1 whose direction of tangential vectoral space creates another manifold of another spherical nature similar to its' original form causing spherical and circular vector tangents ,thus crossing circumferences and interconnecting radial lines of force. By this means we may find their numerical values that can extend into other fields or dimensions.

Integration Constant:

$$\gamma\mu^5 = \sqrt{16}/c^4 \phi_\mu$$

Where:

γ = Lorenz factor

μ = magnetic moment

c = speed of light

ϕ = field potential

G= gravity

ϕ_μ

= *field potential to the inverse exponent of the permeability of space*

This is proportional to the ratio of change of energy over mass to the mass of the travelling particle (ie. geodesics in Klien Space)

Formula For Vacuum/ Mirror INTERACTION:

$$\varpi^A = i\xi_{AB'} \mathbf{B}$$

Where:

ϖ = Angular velocity

A= area

i = Cartesian axis

ξ = damping ratio

B= magnetic flux density

= Pi 3.14...

Thus, angular velocity to the power of the area of Timespacematter of it's magnetic vector potential equals the Cartesian axis * times the dampening ratio to the extended power of the magnetic vector of the magnetic flux density times Pi to the inverse extended power of the magnetic flux density.

*basis unit vector point "A"

Quantum Effects verify:

$$K=8 \sqrt{F} \text{ and } F= c^5 / g$$

Where:

K= Kinetic energy

C= speed of light

G= grav constant

Five fold vector manifold – meaning space moving into a five fold dimension moving spacetime matter by lightwave, space geometry, bio-matter wave into spinor wave functions.

My Cartesian question is what is zero, and where is the curl operator in this equation?

If a field can be measured and it has a value then only by placing it's coordinate in context with the Cartesian Sphere can we acknowledge its' complex nature and make denotions to fortify this conjugate.

Frock Space is interesting and seems to act like neurotransmitters of spacetime manifold integers being the space through which energy tranfers are transistioned .

Time Formulations

Zeeman time acceleration

$$0.0\overrightarrow{1} \times \overrightarrow{0.0} ik + 1.\overrightarrow{01}$$

$$\hat{T}=1(\text{sec per sec})-\epsilon=\epsilon-1$$

Where:

\hat{T} = Time moving at enthalpy

$\epsilon = \text{epsilon}$ (these coorrespond to the transformation matrix):

1	0	T	0
0	1	0	T
T	0	1	0
0	T	0	1

For this formula to make sense we construct a manifold called Genus 1 Topology. Imagine that Timespacematter has two adjoining fields and this is it's demonstration:

Using the concept of Penrose Tiles we use the form of a torus or double tori;
(this is paraphrased from Nassim Haramiens' work)

Tori topology of the Riemann sphere shows surface of the Genus with two holes or openings in manifold which cause toroidal effects(two donuts on top of each other with energy or other moving through them as seen on page 18). This is a continuous manifold whereby an equilateral planar effect of a magnetosphere charged electromagnetically creates a membrane much like a cell. The median is the radius with the equilateral constant and plasmatic acceleration disks of erospheres like that of black holes(as the coronal vibration surrounding black holes contains all the information within it). So data or other moves between the radius of the openings along an equilateral plane that runs through the centre of the radii causing frequency acceleration of:

1 grav/1 dimension/1geometric field/1 ionic wavefield/1 spectrum field
variation= time flux generation/ c^5

1 grav= $9.81 \text{ m/s}^2 \times m^2 / kg^2 / r$

Where:

mass = mass of object being transferred , total mass of electronic charge= me^*
weight squared

kg= data or other density of weight

r= radii of openings

s= seconds

1 dimension= $10^{-4} T$, (Gauss magnetic field free energy)

T= Teslas (Newtons' constant $6.673 \times 10^{-11} \times Nm^2/kg^2/Am$

$$N = (\text{neutronic value of data or other})$$

A=magnetic vector potential

$$m^2 = \text{differential vector of surface area } A \text{ with infinitesimal}$$

Here we use mass squared as it's field potential which inverts past impact parameter at Cartesian

t^1 which begins at 0.0 moving quantummly by q, x, y and z axes.

Area A is the surface area inside the central field of the openings conjoining the tori.

1 Geometric field =Cartesian axes along radial vectors moving like Penrose tiles to create the geometric shape.

$$1 \text{ ionic field generation} = \text{mass of electron } 9.109 \times \frac{10^{-31}}{kg}$$

1 spectrum field= strong force $SU(3)$ of gluon (gauge boson)

S= entropy(energy/temp)(this standard definition is not satisfying and is determinate upon what force(s) acts against mvd (mass \times velocity \times distance)

U=energy potential/internal energy

The gluon is a massless spin-1 particle binding neutrons and protons and has two polarised states, it also carries the strong force called *color*. Since gluons carry color charge they can interact between themselves unlike photons that have no charge. We believe it is this force combined with muon wave action that is the cause of spectrum changes and is called quantum chromodynamics

Light moves at 186,000 miles per sec normally, so we divide its' speed quantumized to its' fourth power by the spectrum field ratio of the flux variances from above beginning at Cartesian T^1 noting that 100 light years is denoted by each quadrant of spacetime matter. So each 180% turn within the double torus represents 1.0 second in real time, and the interior space fold is considered to move correspondingly at 0.01 of a sec which begins at a zero

point curvature ratio in the Riemann surface juncture of tangent spinors as roots of the conformal timemanifold plane in other words other circular/cylindrical tangent vectors intersect with the reference of going forward in time or backward in time, relative to its' transformational matrix format,

Past 0.-01.(i) or Present 0.0(j) or Future 1.00(k)= Cartesian coordinated vector conjugate based on vacuum density of Sch. Proton times Spacetimematter freq. coordinating with Riemann metric

$$S^3 = R^4$$

For every spherical 3d component there is a spherical 4 d component which we call the Riemann sphere which projects into timewave frequencies and causes a fivefold dimensional shift in the double torus , maintaining that the radial surface membrane is continually fluctuating in and out (down cylindrically and out toward the outer surface) thus creating an magnetosphere of "containment". It is often referred to as a wormhole.

**Please note that my calculations of spinor predictions come from certified mathematicians and physicists which I then apply to further concepts. SC*

How The Fields Interact:

$$Z_{\mu} = X_{Re}^{\mu} + X_{Im}^{\mu}$$

" One feature of this approach to quantum theory is twistor space which leads to quantum gravity theory..."

Nassim Haramien

This is what I call "activated matter" grav-field. A biomagnetic interactive polarity that occurs sub-atomically and galactically which initiates magnetic attraction and repulsion thus activating the moles to interact. By this very act

itself the moles are now in context with the universe and entangled into its' memory.

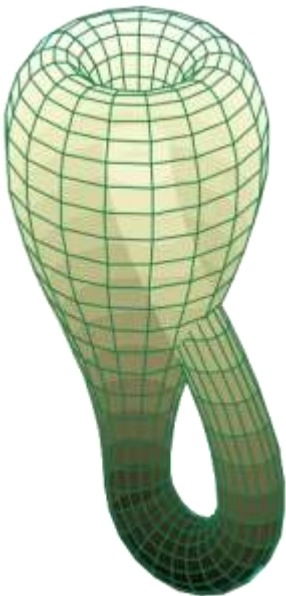
Explanation;

Zeeman principal times the permeability of space equals the large unknown of a geneur displacement (ie. Dark Matter which I call "*Inactivated Matter*") to the power of the permeability of the relativistic mass of the generic displacement to the inverse power of the Reynolds' factor plus the unknown displacement variance to the power of the permeability of the relativistic mass (atomic mass) over the moment of inertia over Intensity (watts per metre squared) times the True mass (mass , density , volume).

The torridal momentum variances shift by degrees of polarity sequences fluctuate by angular momentum coupled with frequency variances from vertical to horizontal , thus fluctuation sequences stays in an ordered field of operational format.

Using Klien Space as a format; This would be in four D Klien space...

From Wikipedia, the free encyclopedia



“C” is a constant and “s” is a parameter if we consider the generalized five dimensional curvature tensor and using

$$f_{\mu\nu}$$

Where;

f = frequency function

μ = relativistic mass

v = velocity

therefore in terms of electromagnetic field strength;

$$f_{\mu\nu} = \frac{\sqrt{16G}}{c^4 F_{\mu\nu}}$$

Where;

$$\frac{\sqrt{G}}{c^4} = \frac{1}{\sqrt{F}}$$

Where;

F = the quantized force is of 10^{93} *grams per cubic centimetre of space*

The energy force of the activated Universe as expressed by the Haramien /Rauscher solution to Einsteins' field equations which incorporates torque and corrilis effects. It appears the topology of these dynamics lead to a dual torus effect, one reflecting the other in an ordered fashion. So again we find;

$$\gamma_{\mu}^5 = \frac{\sqrt{16G}}{c^4} \phi_{\mu}$$

Which we have aforely described.

Cartesian coordinate by vacuum density velocity volume frequency;

$$\psi = (10^{93} \text{ gr/cm}^3 \beta) \mu / \nabla q = Re T^3 * \frac{.001}{R^4} v \vec{c}^4$$

Where:

$v \vec{c}^4$ = velocity of the speed of light moving into other dimensions

β = Magnetic field density

q = electric charge

T = Torus curved space Timespace – matter transfer

Re = Reynolds factor

μ = permeability of space

For every .001 of charge (columbs per Tesla) density per gram of volume per cubic centimetre of space , we should move 1 grid space coordinate Cartesian (by product of R^4 using the Riemann metric coordinate values $S^3 = R^4$) light year in Spacetime matter by the ratio of curved space for a double torus field which defines two or more points (ie. point of origin and point of destination) which begin at a zero point curvature ratio from;

$$T^2 = S^1 \times S^2(x, y)'$$

and should move by 10 year increments per grid space coordinate due to the vector tension density in the interior subspace of the T , Torus $g=1$ which in Timespace matter which is analogous to Timeframe coordinate systems.

∇ = curl differential operator

{ the operation manager through which triangulation operates the time frequency fluxes }

The Matrix operations are what show you the coordinate cycle. Again...

1	0	T^1	0
0	1	0	T^1

T^1	0	1	0
0	T^1	0	1

For every T^1 time mole we move .001 columbs per Tesla per sec velocity in $1cm^3$ and these coordinates are cylindrical as in the Reynolds factor. In timespace all coordinates have three conjunctive numerical fields propagators; Past ,Present, Future which interconjunct in circular field fluctuations.

The field variances are dependent on the magnetic flux field and in what direction that it is presented. Right Sunwise direction moves forward in time, left moves backward in time. A coupling of the fields presents a *continual now point* which freezes you or the subject in time. Generation of the continual now point allows for in depth study of the subject(s) and can be very useful.

Magnetic triangulation causes the effect to continue its' motion.

RAINBOW MANIFESTATIONS

Time tetrahedrons facilitate time field fluctuations. Tetrahedrons can be manifold in Timespacematter through auric, physical, and spiritual manifestations. Each realm denoting a different frequency fluctuation. The astral planes function as an etheric realm as all projections manifest there initially. The interdimensional integration of tetrahedraonal geometry intersects with other realms using extended (Penrose tile type) fields of Star of David tetrahedrons intersecting as they spin, otherwise known as the Merkeba. There exists a central core which creates a torridal pathway “ through the abyss” as the two dimensions connect which according to the Kabbalarians only the High Priestess or the attained can go. We have just described this path mathematically as the core space that manifests between the double torus and is the means through which both the physical and non-physical realms communicate and transfer energy and matter.

This path is known as Da'ath,⁷ (Hebrew) and as we have said is called the The Abyss, so through this abyss are all paths attainable and all Trees verifiable and therefore shall the initiate traverse the inverse or extraverse pathways to dimensional Tees or realms wherein all realities exist of all the spheres and the traversing of the paths shall continuously bring us to the Kether of Kether and to this end shall all paths converge.

I quote from the Gnostic Pistis Sophia Vespers:

“In the name and by the power of the Propator I expel all evil inherent and encrusted in the material from which this Altar and this place are made that they may be found worthy of the sacrifice and oblation, which we shall celebrate unto His glory. “

At first I wondered about these words thinking how could this blessed alter be encrusted with evil, however the perspective is huge and I would like to express it to you in laymen's terms.

Since all matter carries a double polarity and has denseness it can therefore be occupied by either forces of light or forces of dark. By entering and

occupying the dense part of matter can the forces of dark “take over” matter. The family of Dark used the means of shape shifting and trickery and managed to find out many things that led to the key to immortality always stealing energy from other beings and enslaving them using that denseness of darkmatter power to destroy by the twelve demonic Thrones. Now at this time of the passing of the nine hells and entering of the Thirteen Heavens , having aligned with the galactic plane with our galaxies’ black hole centre, the ending of the Mayan Calendar, we are entering into the Great Inter-Galactic Conjunction which should be occurring in the next two hundred years, when we will cross the galactic meridian of the spiral arm of the milky way that leads to its’ centre that we will have the opportunity to escape both the planet and that enslavement. Spirituality and science are highly interconnected .

The quantum consciousness that makes up our Entirety exists in many forms in several dimensions. I theorize when we become complete we attain to our highest self which may be in the form of a Sun or other such accumulative phenomena. Moving through the vacuum or abyss constitutes a higher realm of integration of our Entirety.

I myself have traversed is path and my number is 144 and my letter is Samek and my name is Sophia in some realms. But each person must traverse their own path to their higher souls’ awareness and this is however the manner in which the 144,000 may apply their virtue to attainment. Sophia adds up to 89 which adds up to 17 which adds up 8. There are 8 gates of the double torus.

Space manifolds converge from the fourth dimension to the fifth dimension as one goes through the core upon entry to manifold point “a”. What we are saying here is that entry point “a” is where we can enter an accelerated time manifold- the numerology only points to it, “a” is the gravitational sink hole, the entry point to the vacuum , the dimensional wavefield that transforms time space and matter. How to traverse the field with confidence of time modulation is the next stage of evolution.

Since the Scharwtzchild proton is so much more dense and dynamic than a normal proton it interacts with other molecules and substantiates its’ coordinate values, the process by which we substantiate our existence to the

world of our conscious acceptance of our reality in the dynamic of information. The word deepening comes to mind.

“A pulse of light is manifested when the energy level of the atomic structure is altered by outside influences (theory of Max Planck). In the physical plane, the electron of the atomic structure appears to jump from its orbit. According to my belief, the electron does not jump orbit. But this is the illusion we obtain, since we are not equipped to perceive the path of the electron during the anti-matter cycle. What actually happens is that the radius of the spiralling motion is increased or decreased in order to absorb or release the energy imparted to, or removed from, the atomic structure. If the energy is imparted, then the electron must extend orbit in order to maintain balance in the system; and vice versa. Light, or any other radiant energy above or below light frequency, is therefore manifested by undetectable changes in the radius of the spiral motion of the electron during the anti-matter cycle.

If this hypothesis is correct, movement from one point in space to another point, regardless of apparent distance — in other words, true space travel — is completely feasible. By manipulating the frequency rate of the matter-anti-matter cycle, the time and speed of light can be varied in direct proportion to any desired value.

All the mathematical evidence amassed so far indicates that the maximum number of individual elements to be found in the universe will be 144. Each of these elements will have, in theory, six isotopes, which will make up a completed table of separate substances numbering 1008. An isotope is an atom of the same element which has a different nuclear mass and atomic weight.

Mathematically, the progression would create 144 octaves of separate substances giving a theoretical value of 1152. The difference between the total number of substances (1008) and the harmonic value in octaves (1152) would be 144, the light harmonic.

Once the precipitation of physical matter has occurred, the buildup of substances takes place according to a very well ordered mathematical sequence. Light-waves, guided seemingly by superior intelligence, form intricate interlocking grid patterns which graduate from the simple to the more complex, as the elements from hydrogen at the lower end of the scale, to element 144, come into being."

(Pp 102, MATHEMATICS OF THE WORLD GRID By Bruce L. Cathie-

And...

"Transmuting is the key. We can change the channel if we choose, turn down the volume, fine tune the specific radio band. The Grid Engineer has the potential for transmuting (freeing the inherent energy by releasing it from its form bondage) the solar/celestial energies by intelligent interfacing with the Electromagnetic 1746 Grid through any of the 144 planetary Round Table holograms, or terrestrial Zodiacs resident on Earth.

This Grid, we must remember, is the Golden Alchemical Bowl of electromagnetic differentiation, and the potential alembic of our transfiguration from gravitationally bonded humans to Humans of Light."

(Pp.178 LEY LINES AND THE MEANING OF ADAM by

Richard Leviton and Robert Coons-)

And...

"The Becker-Hagens report mentioned the Twelve Devils' Graveyards Around the World (Saga Magazine, 1972) where magnetic and energy aberrations were located. These are found zig-zaging the equator at 30 degrees above and 30 degrees below the equator.

Using an "Atlas" software computer program, Robert Foulkrod found the distance in miles to be 4264 miles between adjacent "Graveyards." The corresponding musical frequency based on the speed of sound in air is 0.0000502 cps. By octave expansion to the middle "C" octave (multiplying by 2 to the "n" number of times), this translates to a musical note of "A". This

particular distance or musical note might be an indication of disharmony between countries, if, indeed, distance is a factor....The method of determining the frequency of a distance is based on formula in physics which is stated in the letter to Becker-Hagens.

$$v = fw$$

where $v = (1130)$ the velocity of sound in air at room temperature in ft/sec,

f = frequency in cycles/sec or Hertz

w = wavelength or distance in feet.

Because of the nature of the inverse properties of wavelength and frequency, the frequency and wavelength can be found if one knows the speed of sound for the material through which the sound travels.

Through the oceans the speed of sound would be faster and hence create a different musical note..."

(INTERNATIONAL HARMONY BASED UPON A MUSIC OF PLANETARY GRID SYSTEMS by Barbara Hero-Pp 202-MAPPING THE WORLD GRID by David Hatcher Childress)

And we all know that sound light and frequency are interchangeable through mathematical formula which is too tedious to go through here. Barbra Hero has extensive tables correlating these "notes" in the aforesaid manual.

Pneumatikoi- the spiritual sons and daughters of light who can judge the fallen angels and activate the Treasury of Light upon the face of the Earth.

Joel:2:28-29;

" In the end of days spirit will be poured out upon the sons and daughters..."

Know the gates, cross the thresholds, (herbs, water, vapour, smoke, merkeba, geometry and Light).

The presence of a photonic light field in all matter explains much as well as we consider the arrangement of our substrate DNA and look to modulation for

the awakening of what J.J. Hurtok calls the “Homo Universalis- the universal humanity transluminal light vesture which contains all information, stories and holy scripture of the highest to co- create our human divinity to that of light beings such as the *Star- body consciousness* clothed in the trinity garment of the spirit .”

Lynn McTaggart explores the concepts of the possibility of our bodymind in entanglement with all things and that transitory element being ,of course, water.

“ light is normally composed of many photons of many wavelengths much as a laser does...these single wavelengths of water molecules appear to become informed” in the presence of other molecules they tend to polarize around any charged molecule- storing and carrying its’ frequency so it may be read at a distance.

(Pp.69-70 The Field, Lynn McTaggart)

Water, plasma, gas all carry these potentials and allow us to transfer information into any available medium.

The sound barriers show classic major scales where the perfect 5th(a coincidence of five fold time manifold?) operates as a prominent harmonic activator to release barriers of the lower consciousness realms to generation of freedom from “ Heimarmene”- the three veils of darkness (444,666,999 no sex , no drugs, no alcohol) only then can She manifest as her True Power fully and restore the Holy spirit and eternal light – even in the darkness. One must begin to prepare for the journey. Using seed syllables for each tone corresponding to the chakras and colours appropriate one mediates daily to increase auric field and raise brain functioning.

Ezekiel 1-14-22

...And the living creatures ran and returned as the appearance of a flash of lightning.

15 ¶ Now as I beheld the living creatures, behold one wheel upon the earth by the living

creatures, with his four faces.

16 The appearance of the wheels and their work *was* like unto the color of a beryl: and they four had one likeness: and their appearance and their work *was* as it were a wheel in the middle of a wheel.

17 When they went, they went upon their four sides: *and* they turned not when they went.

18 As for their rings, they were so high that they were dreadful; and their rings *were* full of eyes round about [Rev. 4.8](#) them four.

19 And when the living creatures went, the wheels went by them: and when the living creatures were lifted up from the earth, the wheels were lifted up.

20 Whithersoever the spirit was to go, they went, thither *was their* spirit to go; and the wheels were lifted up over against them: for the spirit of the living creature *was* in the wheels.

21 When those went, *these* went; and when those stood, *these* stood; and when those were lifted up from the earth, the wheels were lifted up over against them: for the spirit of the living creature *was* in the wheels. [Ezek. 10.9-13](#)

22 ¶ And the likeness of the firmament upon the heads of the living creature *was* as the color of the terrible crystal, [Rev. 4.6](#) stretched forth over their heads above.

The magnetic walls of the machine that moves through Timespacematter seems to be described here, very similar to some of my designs and the designs of others who do magnetic wheel experiments. For it, strangely enough, is one of the keys to utilizing the magnetic wheel to have three fields interacting at once, three wheels, the + in the centre between two- fields.

The presence of a photonic light field in all matter explains much as well as we consider the arrangement of or substrate DNA and look to modulation for the awakening of what J.J. Hurtok calls the Homo Universalis

Just to explore a few quanti concepts, from Revelations : John The Divine Scroll;

“ Micheal must come with Christ in order that their powers overcome the Prince Of Darkness and break his power over the Earth...only then would all humanity break free and the Sabbath bride once again take her place next to Christ.”

Pistis Sophia: Greek for Faith and wisdom She personifying the combination of these two qualities which embody one form. Unwillingly, she implants her Divinity into the lower realms through the trickery of the Archons. When she realizes this her fallen consciousness cries out to be saved from the lower realms who sought for her power because she was held aloft of the 13th aeon. The higher realms recognised but could not accept her because of the stains of the sins upon her aura that she had committed whilst in the midst of the Archons. So in praying for the Saviour to come she confessed and lamented her sins and Jesus came to raise her up out of the lower realms and when he did this the bonds that the Archons had upon her were broken and Authades the self-willed one, controller of the underworld would be her antagonist until she ascends to her rightful place.

Ordeal Preparation

Severe the routine must be. Six months of recluse (buddha potatoes) speak to plants, receive instruction, synthesis of poisons, mushrooms , medicinal teas, fish, vegetables, greens, fruit (berries) roots and preferred oils, juice from trees and tea from the garden. Please no sugar, no red meat, no wheat (444,666,999). This is the formula of the past reliving itself upon me in my awakening.

This act causes me to reactivate myself in the 14th aeon as She whose wisdom reigns supreme over the agency of the Dark lord -the inferior hierarchy that allows for imperfect order condensations of matter energy notwithstanding the emanations of the soul. She petitions to Jesus to retrieve her and when she is released all 10 bonds are released at once!

“ for it appears when they bonded the emanations penetrated to all 10 worlds...”

(Pistis Sophia – J.J. Hurtok sorry page number was lost...)

So by the works of the inner pathways of Da'ath we penetrate and emancipate ourselves and help our brethren.

Atomic chemical reaction behind the veil of spectrum to actively transport the movement of electrolyte ions across all membranes against a concentration gradient (ie. Riemannian Sphere) expenditure of plasma to convert into plasmin filament and create an anabolism- a constructive phase of metabolic synthesization of protoplasma for growth and repair directed by genetic DNA from amino acids and nutronic elements which can become anabiosis- the restoration of life after apparent cessation.

Of The Druids;

“ We may read, if we them right; All may sing the sacred chant and make the sign upon the sand;

TRA PARO'R R'HAN ANVARWUL R LANW'R AY VRID VORE

Three mermaids while in part immortal shall fill the pleasant sea where the coral rocks are throwing in ancient Azatland and the emerald sea reflecting pair forms in Shadowland far below in the fairy scrolls , immortal spirits its' well where the Druids sprang and there are found the sacred records.”

(Ancient Druidic saying)

And so now we go, through the mountain ranges, filled with food and pines unknown to us, following always the path to the Initiated Source – The Galadriel Tree so we can be blessed and replenished of purified energy and foodstuffs and materials to carry us through...

Bibliography

MAPPING THE WORLD GRID by David Hatcher Childress

The Field, Lynn McTaggart © 2002 , HarperCollins Publishing

Uriel's Machine , Knight & Lomas © 1999 , Random House

Reflections On A Near Universe Suzanne Chappell, © 2007, Xlibris Publishing

Copies can be obtained at

http://www.amazon.ca/s/ref=nb_sb_noss?url=search-alias%3Dstripbooks&field-keywords=Reflections+On+A+Near+Universe&x=0&y=0 or is available in e-book form at:

<http://www.amazon.co.uk/Reflections-Near-Universe-ebook/dp/B005MAWNHG>

<http://en.wikipedia.org/wiki/Organelle>

http://en.wikipedia.org/wiki/Conservation_of_angular_momentum#Conservation_of_angular_momentum

http://en.wikipedia.org/wiki/Algae#Relationship_to_higher_plants

<http://en.wikipedia.org/wiki/File:Penrose-dreieck.svg>

http://en.wikipedia.org/wiki/Magnetic_moment#Current_loop_definition

http://en.wikipedia.org/wiki/Angular_momentum_operator#Spin.2C_orbital.2C_and_total_angular_momentum

<http://theresonanceproject.org/research/scientific>

http://theresonanceproject.org/wp-content/uploads/quaternions_spinors_twistors_paper.pdf

<http://www.youtube.com/watch?v=6wJYce3I80E>

www.youtube.com/watch?feature=player_embedded&v=rKnAZFkm3uu

<http://en.wikipedia.org/wiki/File:Bohr-atom-PAR.svg>

en.wikipedia.org/wiki/Conservation_of_energy

other diagrams used by special permission...